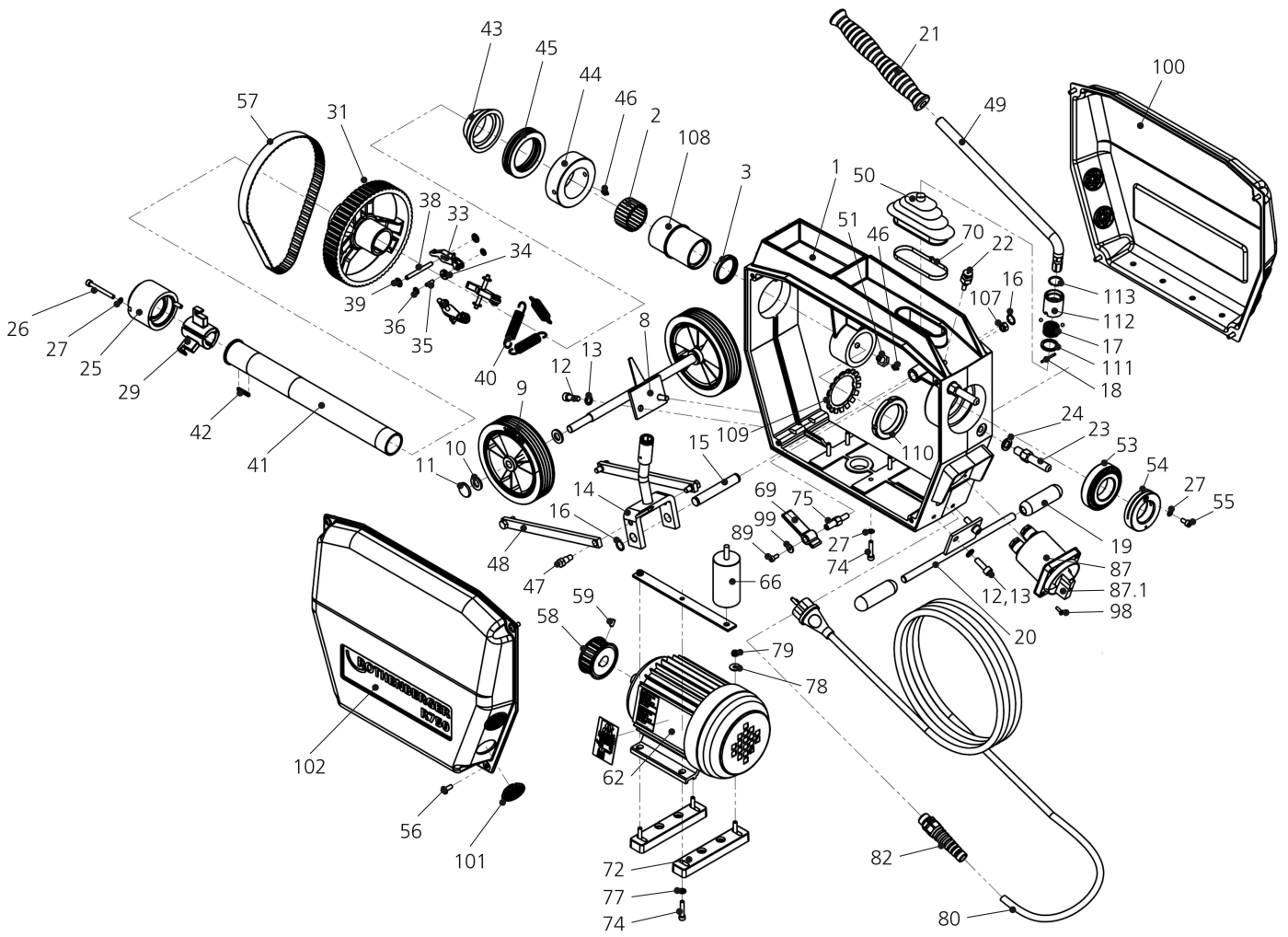


R750

No. 72689 / 72910 / 72911 / 72901

dated: 01/18



Item no.	Description	Article no.	Quantity
1	Housing complete R750	H99047	1
2	Needle bearing NK 40/30	H98567	1
3	Gasket G 40x50x4	H98568	1
8	Retainer for wheel R750	H99096	1
9	Wheel 148-32 Gleila 12 mm	H99097	2
10	Washer A12 DIN 125	H88234	4
11	Locking cap	H88332	2
12	Screw DIN 912 M8x25 galv.	H98262	4
13	Spring washer DIN 127 A 8 galv.	H98263	4
14	Holder profile for hand lever pluggable ex. 2006/07	H81817	1
14	Holder profile for hand lever turnable till 2006/07	---	1
15	Bolt for hand lever	H90176	1
16	Spring washer DIN471 15x1	H98199	2
17	Compression spring 1,5x24x20 mm DIN1722	F85106	1
18	Clamping sleeve 3x32 DIN 1481	H88652	1
19	Rubber pad 25x12x90 mm 60-7	H98256	2
20	Base, rear	H99013	1
21	Handle PVC	H98397	1
22	Catch for lever locking	H90179	2
23	Dowel pin SW 17/80	H98466	2
24	Spring washer DIN 127 A12 galv.	H98578	2
25	Cap, complete	H99020	1
26	Screw DIN 912 M6x55 galv.	H88469	2
27	Lock washer DIN 6797 V6 galv.	H98448	7
29	Clamping jaw complete (set 3 pieces)	72563	1
31	Drive pulley	H99027	1
33	Clamping jaw lever	H98436	3
34	Pressing roll for clamping jaw	H98437	3
35	Cylinder pin DIN7 5 m 6x16	H98438	3
36	Locking washer Starlok	H98439	6
38	Cylinder pin DIN7 6 m 6x60	H98443	3
39	Locking washer Starlok 6	H98444	6
40	Tension spring	F98109	3
41	Shaft for drive pulley R 750	H99029	1
42	Paralell key DIN 6885 A4x4x30	H88613	1
43	Cone sleeve diameter 80 mm	H98453	1
44	Thrust bearing	H99030	1
45	Ball bearing 51112	H98579	1
46	Lubricating nipple H1 M6x1	H98963	2
47	Joint bolt for R750	H99032	4
48	Joint plate	H90175	2
49	R750 hand lever pluggable ex. 2006/07	H81818	1
49	R750 hand lever turnable till 2006/07	---	1
50	Bellow	H98395	1
51	Retainer for lubrication nipple	H99074	1
53	Taper roller bearing 30208 A	H98652	1
54	Disc	H98597	1
55	Screw DIN 912 M6x12 galv.	H88388	1
56	Fillister head screw with flange	L20021	8
57	Toothed drive belt 270I075 R750	H99037	1
58	Motor drive pulley R750	H99038	1
59	Set screw DIN 913 M6x12	L81898	1
62	Motor 110/115V with cond. 110 mμ	H99040	1
62	Motor 230V	H98482	1
62	Motor 100V with cond. 110 mμ	H99039	1
66	Condenser 30 μF, 400V	H98293	1
69	Lever locking	1200000234	1
70	Hose clip	H97456	1
72	Insulation flat, compl.	H98308	2
74	Screw DIN 912 M6x30 galv.	H98352	8
75	Bolt for lever locking	H98451	2
77	Washer DIN 125 A6,4 galv.	H98353	4
78	Washer DIN 9021 A6,4	H98351	4
79	Hexagon nut DIN 985 M6	H88501	4
80	Line cord „EUROPE“	H98313	1
80	Power cord ASADA	F85079	1
80	Power cord EUR with PRCD (230V)	F88086	1
82	Screwed cable gland PG 13,5	H86356	1
87	Switch, complete	H98327	1
87.1	Knob for switch with screw	1500000472	1

R750

dated: 01/18

No. 72689 / 72910 / 72911/ 72901

Item no.	Description	Article no.	Quantity
89	Screw DIN 912 M5x12	H98669	1
98	Screw DIN 7985 M4x12	H98333	4
99	Washer DIN 9021 B5,3 galv.	F81677	1
100	Hood, red in trapezium shape	H99053	2
101	Ventilation collar 35 mm	H99073	8
102	Label R750	H99061	2
107	Hexagon nut DIN 985 M8	H88502	1
108	Bearing bushing	H99070	1
109	Locking plate MB 11	H99071	1
110	Shaft nut M55x2 KM11	H99072	1
111	washer	H98499	1
112	Knurled bushing	H98505	1
113	Circlip RW22 DIN7993	F85107	1
H81909	Operating manual	H81909	1

IMPORTANT! To assure safety and reliability, repairs, maintenance and adjustment must be performed by ROTHENBERGER Kelkheim or authorized Service-Centers. Always use Original-Service-Parts. Order your accessories and spare parts from your specialist retailer or using RoService+ online.

Tel. +49 6195 - 800 **8200**

Fax: +49 6195 - 800 **7491**

✉ service@rothenberger.com